

# CAPS “The Common Automotive Platform Standard”

Claims Analysis Report  
Wk. Ending 13/03/2021



[www.caps.co.uk](http://www.caps.co.uk)

*(Author - Kevern Thompson)*



# Claim Definition (CAPS Analysis)

## Unique Claims

A claim that is initiated and exchanged for the first time within the CAPS System “The primary count”

## Supply Chain Transmissions

The Unique Claim plus any additional transmission on the same exchanged claim, e.g. notification to a parts Vendor

*Information enclosed is CAPS data exchanged across the platform, which may be similar to claim trend data throughout the UK*



# CAPS “Weekly” exchange synopsis

This new weekly report will show claim volume trends from the beginning of lockdown 2.0 and through LD 3.0 as a percentage of claims measured against the peak, Wk. ending 07-11-20

The analysis will reveal throughout Jan, Feb and into Mar-21 a return to operational activity, where the statistics display a welcome return back to an upward increase.

Some of the factors reported to be causing fluctuations are;

- Bodyshops reporting continued reduced in workforce due to flexi-Furlough

- Schools re-opening across the Country wk. beginning 8<sup>th</sup> March 21

- Traffic analysis starting to show an increase in peak trends

- CAPS Measures claims exchanged and not necessarily the frequency of “New Claims” indicating a weekly lag between newly reported Vs exchanged claims?

Regional Measurement analysis using the UK Postcode regional database by identifying each Bodyshop location exchanging data.



# Unique & Transmissions

Unique Transmissions



Lockdown Period 2.0

Lockdown Period 3.0

Wk ending 07/11 Wk ending 14/11 Wk ending 21/11 Wk ending 28/11 Wk ending 05/12 Wk ending 19/12 Wk ending 26/12 Wk ending 02/01 Wk ending 09/01 Wk ending 16/01 Wk ending 23/01 Wk ending 30/01 Wk ending 06/02 Wk ending 13/02 Wk ending 20/02 Wk ending 27/02 Wk ending 06/03 Wk ending 13/03



# Claims Volume Analysis Week Ending 13/03/21

Measurement against (Wk. End 07/11/20) exchanged peak;

\*Unique Claims: 82%

Supply Chain Transmissions: 91%

Claim volumes exchanged from previous week +/-

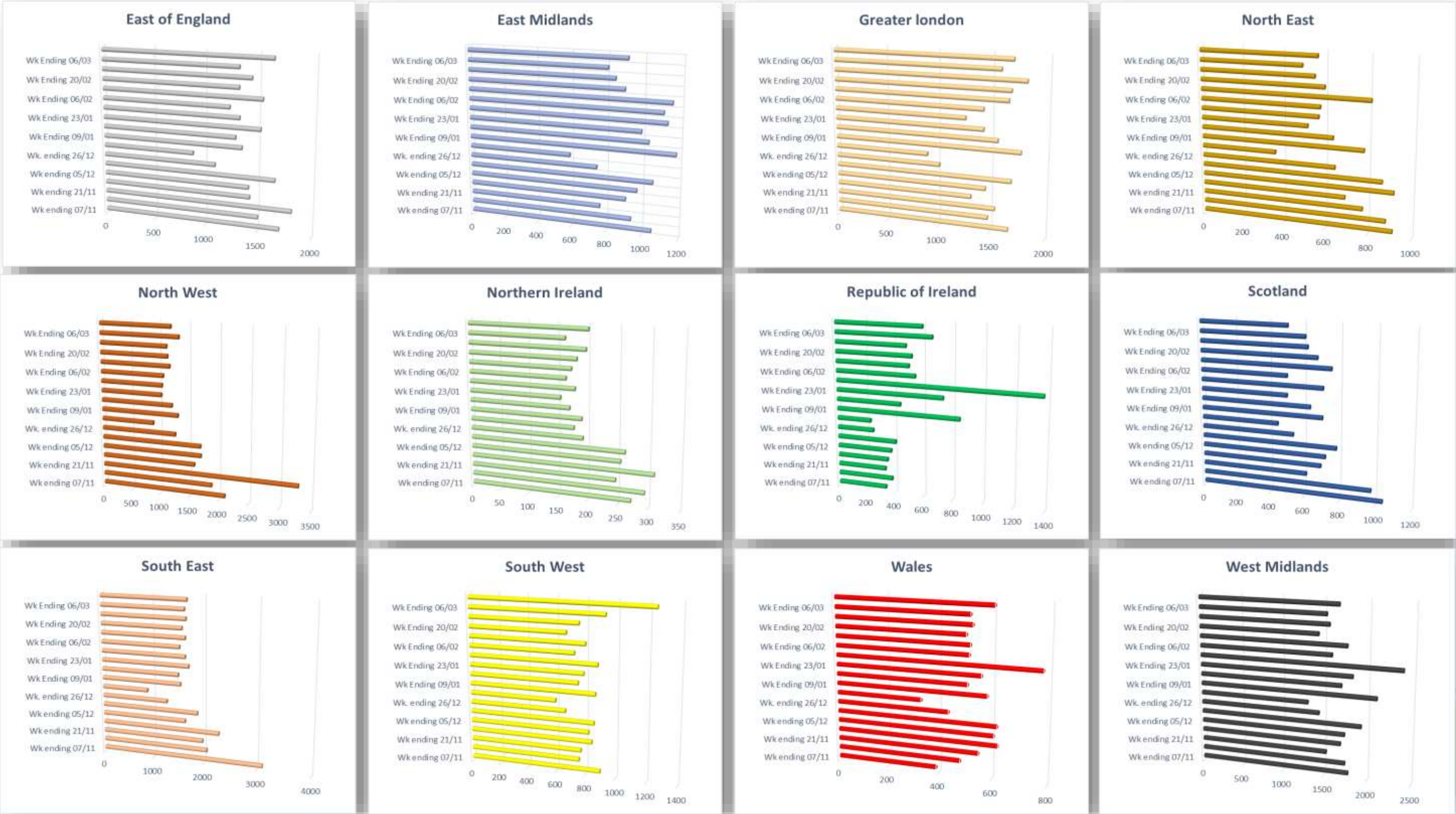
\*Unique Claims: +6%

Supply Chain Transmissions: +6%

*\* A claim that is initiated and exchanged for the first time within the CAPS System “A Unique Claim”*



# Regional (Unique) Claims Exchange Analysis



# Thank You

Further contact requirements – [kthompson@caps.co.uk](mailto:kthompson@caps.co.uk)



[www.caps.co.uk](http://www.caps.co.uk)

