

Market Intelligence

12 January 2022

#ARC360

www.arc360.co.uk



In association with:





CORPORATE PARTNERS



PARTNERS



#ARC360

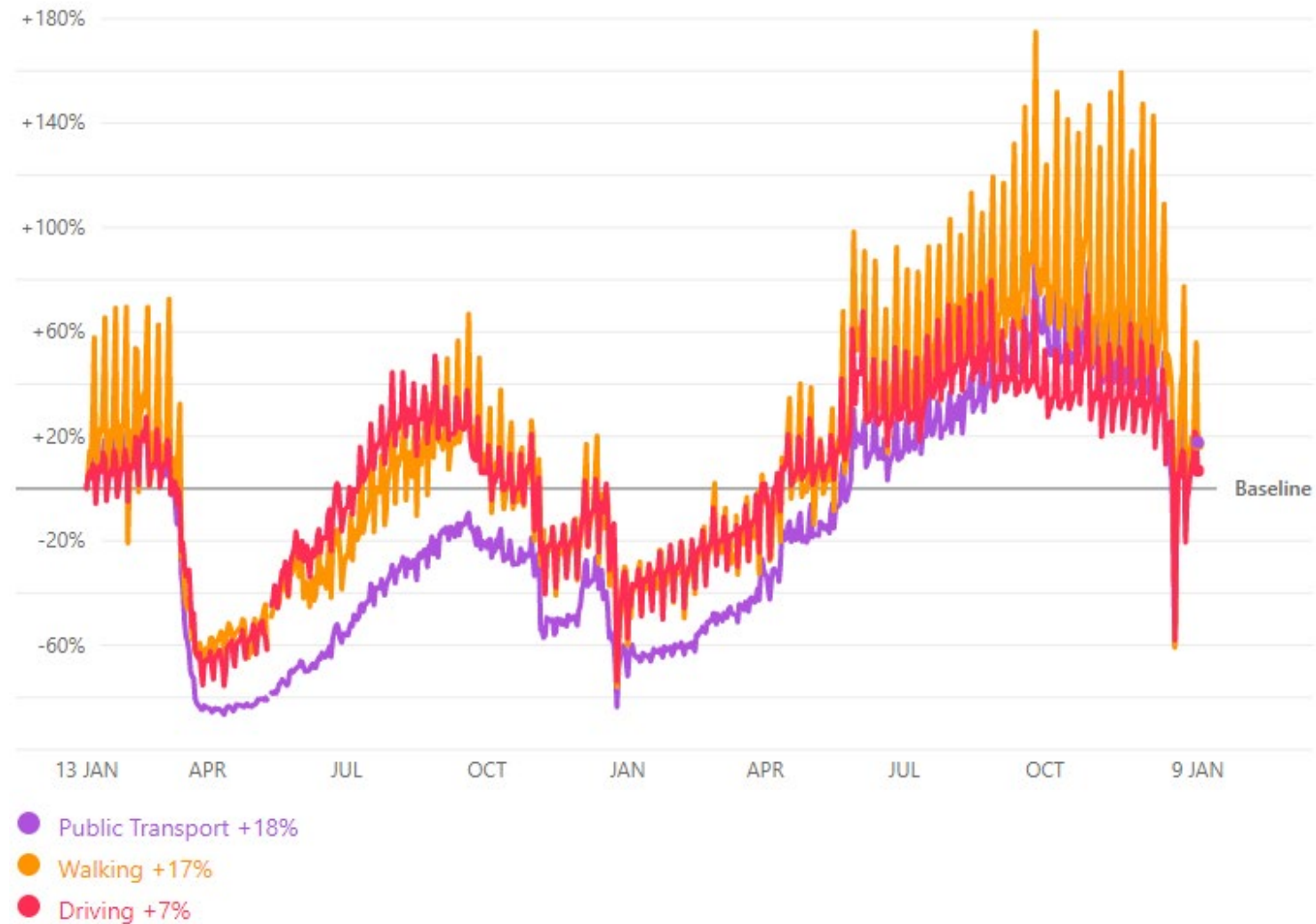
www.arc360.co.uk

In association with:



Apple Mobility Trends Report

UK 11/01/22



#ARC360

www.arc360.co.uk



In association with:



Google Covid-19 Community Mobility Report

Greater London 07/01/22

Retail and recreation

-31%

compared to baseline



Mobility trends for places such as restaurants, cafés, shopping centres, theme parks, museums, libraries and cinemas.

Public transport

-48%

compared to baseline



Mobility trends for places that are public transport hubs, such as underground, bus and train stations.

Workplaces

-35%

compared to baseline



Mobility trends for places of work.

14/12/21

Retail and recreation

-40%

compared to baseline

Public transport

-51%

compared to baseline

Workplaces

-42%

compared to baseline

#ARC360

www.arc360.co.uk



In association with:



Google Covid-19 Community Mobility Report

Greater Manchester 07/01/22

Retail and recreation

-5%

compared to baseline



Mobility trends for places such as restaurants, cafés, shopping centres, theme parks, museums, libraries and cinemas.

Public transport

-27%

compared to baseline



Mobility trends for places that are public transport hubs, such as underground, bus and train stations.

Workplaces

-28%

compared to baseline



Mobility trends for places of work.

14/12/21

Retail and recreation

-13%

compared to baseline

Public transport

-35%

compared to baseline

Workplaces

-33%

compared to baseline

#ARC360

www.arc360.co.uk



In association with:

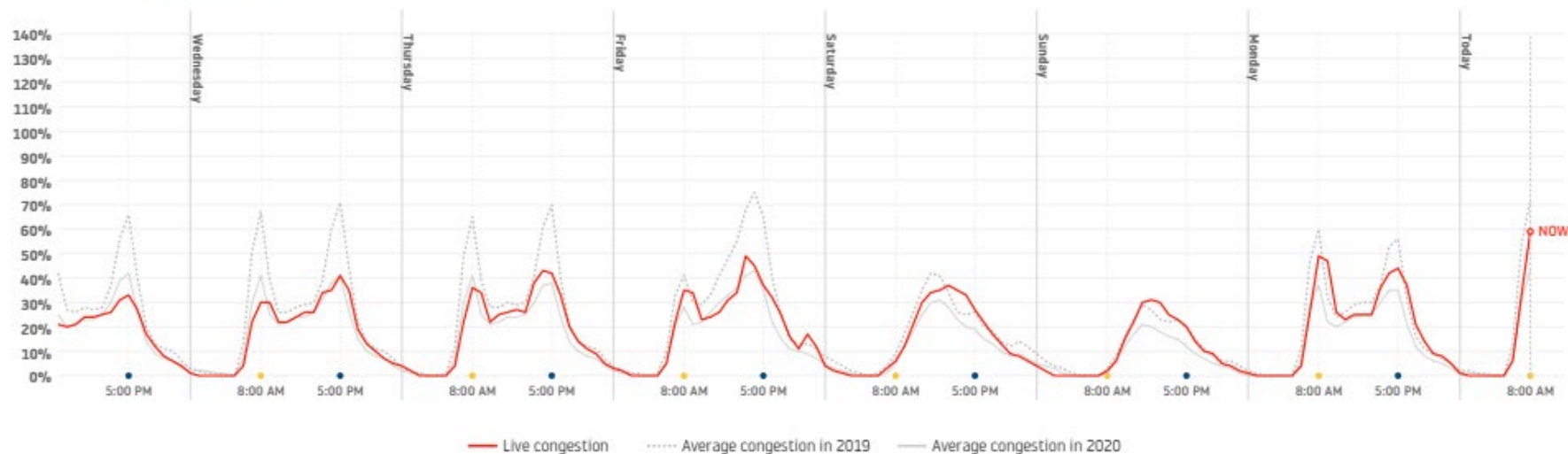


TomTom Live Traffic

Bristol 11/01/22

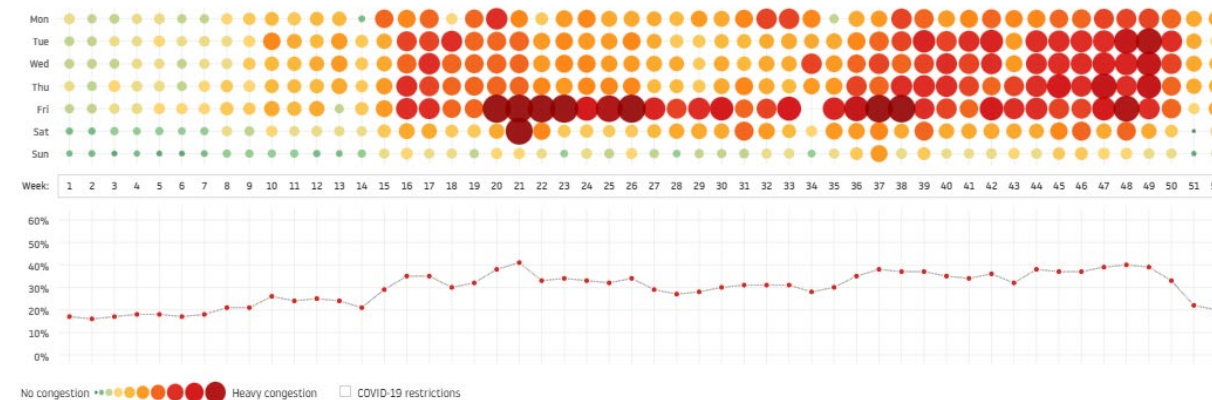
HOURLY CONGESTION LEVEL

Last 48 hours **Last 7 days**



DAILY AND WEEKLY CONGESTION LEVEL

Average congestion Difference from 2019



#ARC360

www.arc360.co.uk



In association with:

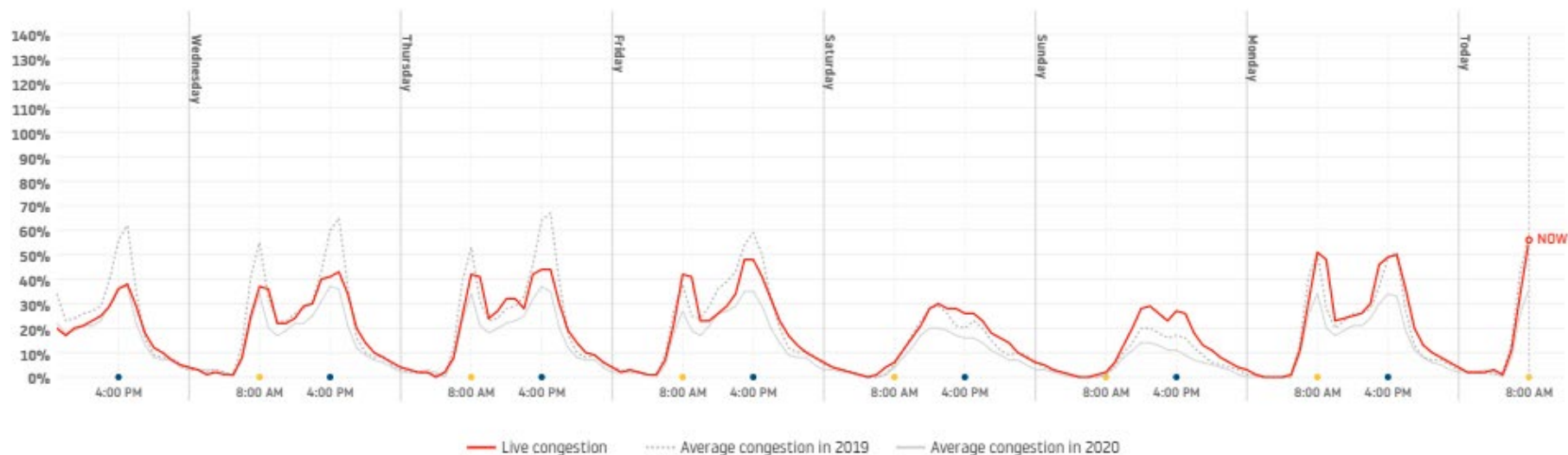


TomTom Live Traffic

Birmingham-Wolverhampton 11/01/22

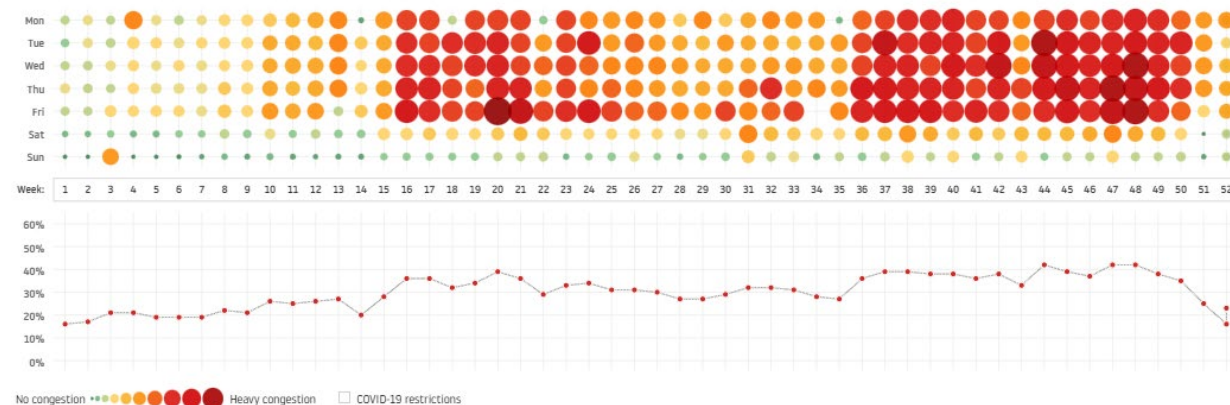
HOURLY CONGESTION LEVEL

Last 48 hours Last 7 days



DAILY AND WEEKLY CONGESTION LEVEL

Average congestion Difference from 2019



#ARC360

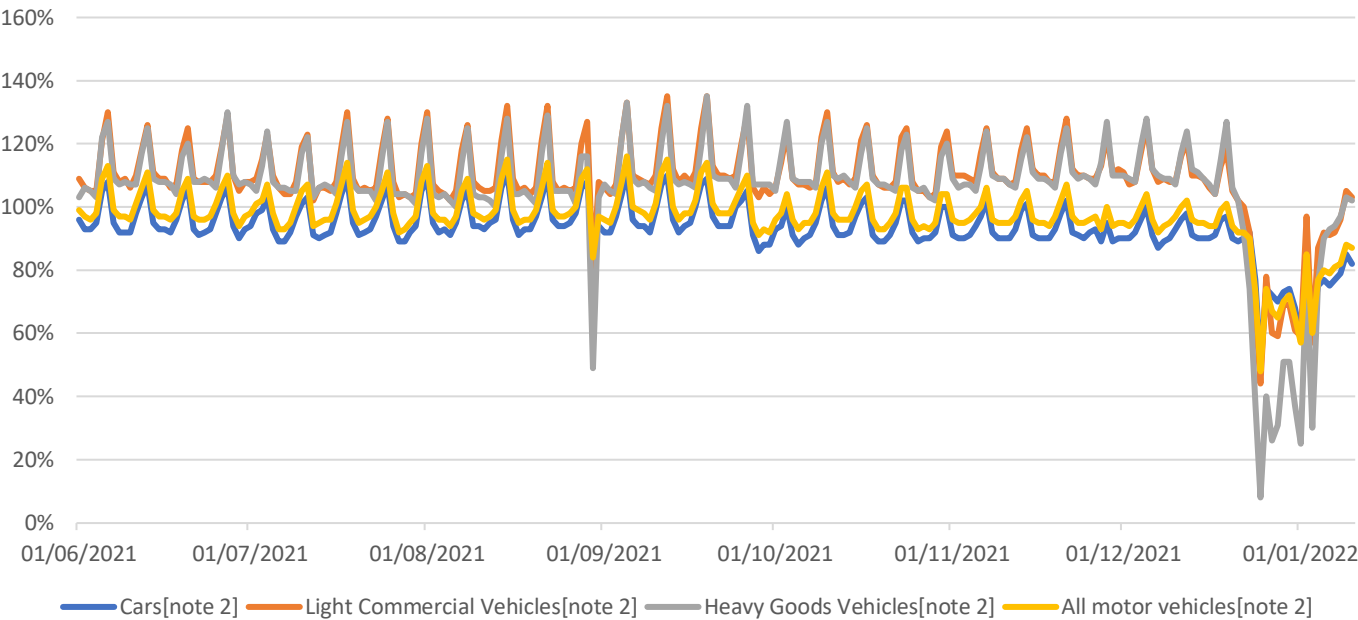
www.arc360.co.uk



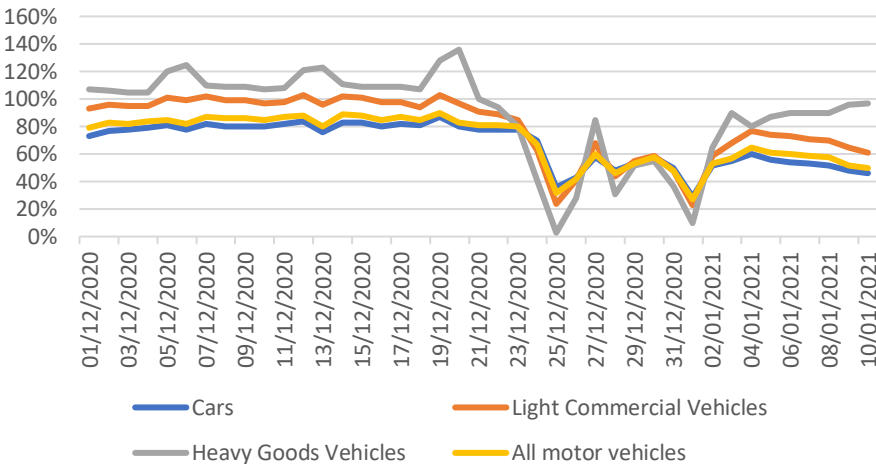
In association with:



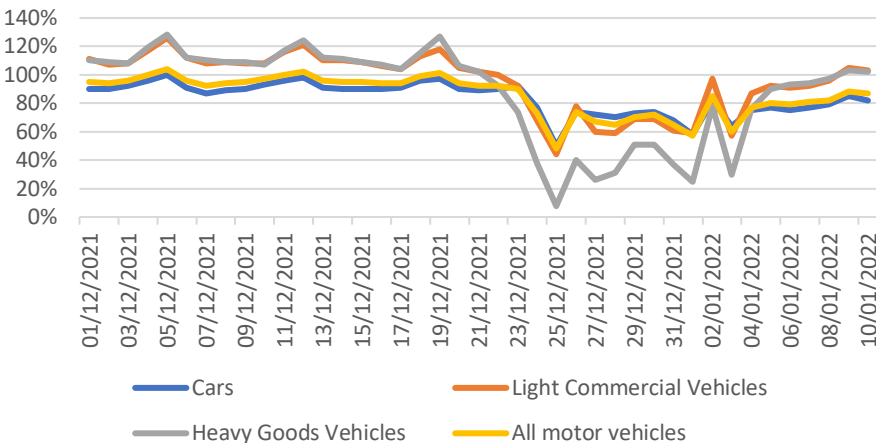
Use of transport modes: Great Britain, since June 2021



December 2020 – 10 January 2021



December 2021 – 10 January 2022





“ Happy 2022 everyone.

The end of 2021 saw the introduction of Plan B measures, which together with the Christmas holidays and increase COVID infections led to a drop in traffic congestion, accidents and therefore repair volumes. This was ‘as predicted’ at the end of November.

The full year of 2021 therefore finished at 78% of 2019, with a predicted return to 85-90% as we progress through 2022.

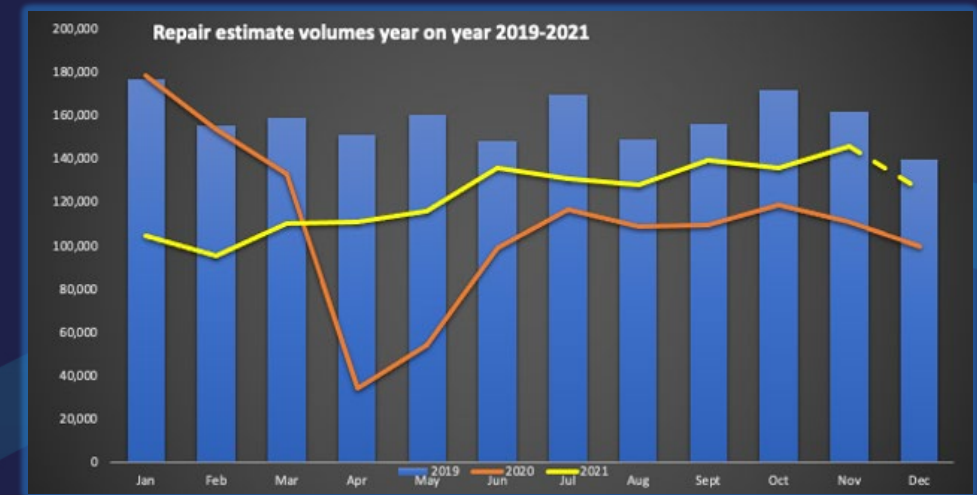
We calculate one million less repairs have been completed by the industry because of the pandemic which, on today's repair values, is a loss of £2.3bn in spend.

Repair costs rose again in December - to an all-time high - with both lead times and resulting cycle times moving out too.

Looking at the wider market car sales had another poor month, the full year only narrowly better than the lockdown impacted 2020 because of the continued semi-conductor shortage.

All this, and more, is highlighted in detail in Trend Tracker's 2021 summary report to be released later this week.

”



#ARC360

www.arc360.co.uk



In association with:





CORPORATE PARTNERS



PARTNERS



#ARC360

www.arc360.co.uk

In association with:

